

Other Camera possibilities



Analog

- FAMOS camera
- Available in standard, day/night and IR-sensitive versions



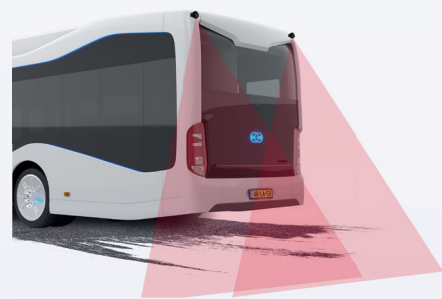
GSML

- Real time digital HMOS camera
- Available in different apertures up to 180°

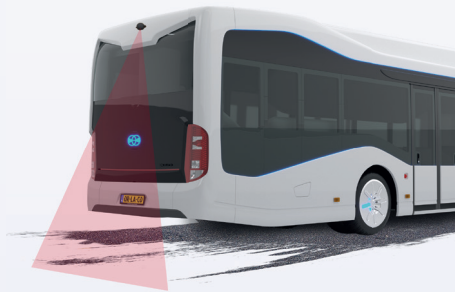


Ethernet

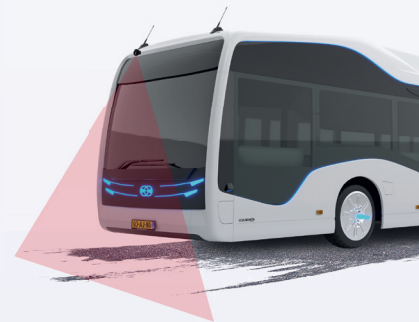
- EMOS camera
- Available in standard and automotive Ethernet



Tail swing view



Rear view



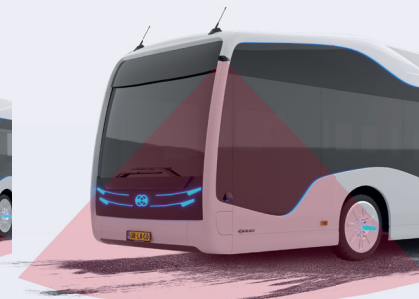
Front view



Door view



Side view



CornerEye®



+31 (0)342 404 555
info@orlaco.com



scan to watch
the video

0994580 V2.1 EN

BUS & COACH
VISION SOLUTIONS

EN

www.orlaco.com

Vision is
our mission®



BUS & COACH
VISION SOLUTIONS

Stoneridge | ORLACO

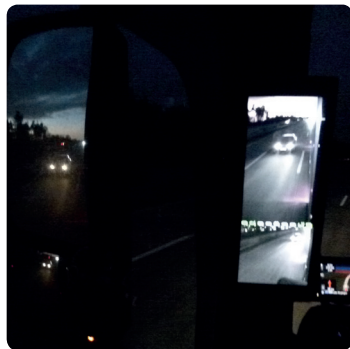
MirrorEyeTM

Increase safety and reduce fuel consumption on your bus or coach with the MirrorEye camera system. MirrorEye is Stoneridge-Orlaco's latest innovation in mirror replacement for trucks and buses.

MirrorEye has been designed to perform in all conditions. This HD camera monitor system always provides a sharp and detailed image, even when faced with low sun, rain, snow and dust.

The cameras adjust effortlessly between light and dark conditions in tunnels using built-in infrared light and also offer an **optimum view at night**. MirrorEye ensures that drivers can do their job safely and confidently.

Sharp image in dusk and dark circumstances



Perfect vision in rain, snow and dust

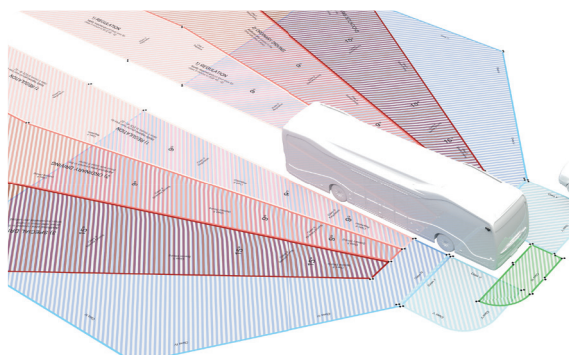


Optimal image while driving with sun glare



The future in mirror replacement

MirrorEye increases safety by covering a larger field of vision than mirror classes II, IV and V. With a better view, you can drive in comfort and maneuver easily in all traffic situations. This increases safety for the driver, passengers and other road users.



Vision solutions - Improved safety and efficiency

Orlaco camera systems for buses and coaches offer the ideal vision solution for any type of bus. Efficient and safe transport are essential for buses and coaches, and there is an increasing focus on fuel efficiency, high utilization and low total cost of ownership (TCO). For each situation, we develop high-quality professional vision solutions with the aim of increasing safety, efficiency and comfort.

Orlaco standard

- ✓ IATF 16949
- ✓ CE-marking standards
- ✓ R10 EMC criteria, R46 mirror directive and R118 flammability approved
- ✓ 50G shock- and vibration proof
- ✓ IP69K water- and dust protection
- ✓ Operating temperature -40°C to +85°C

